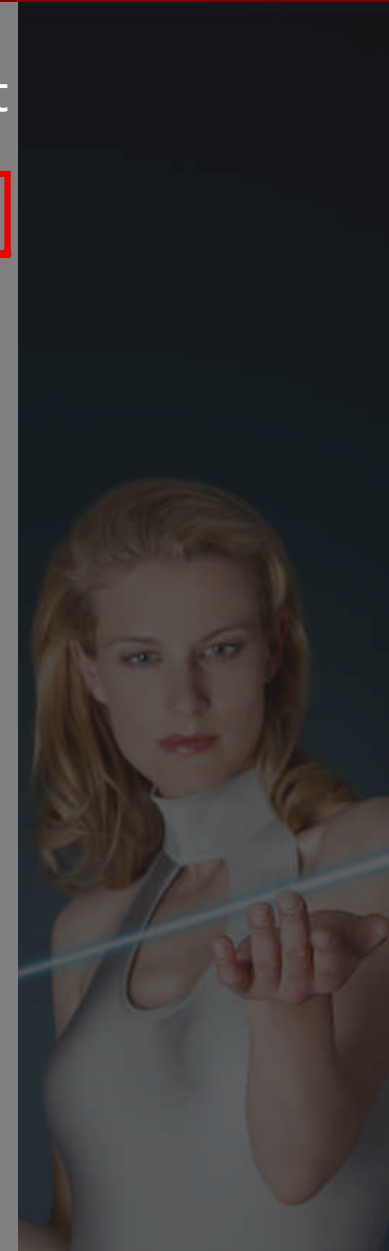
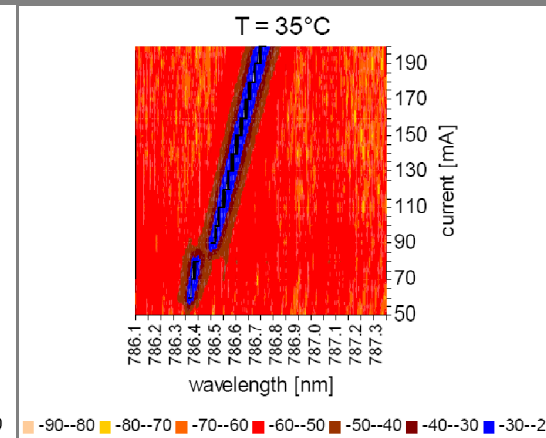
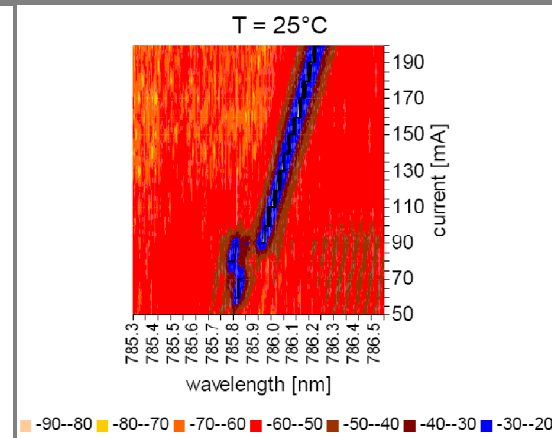
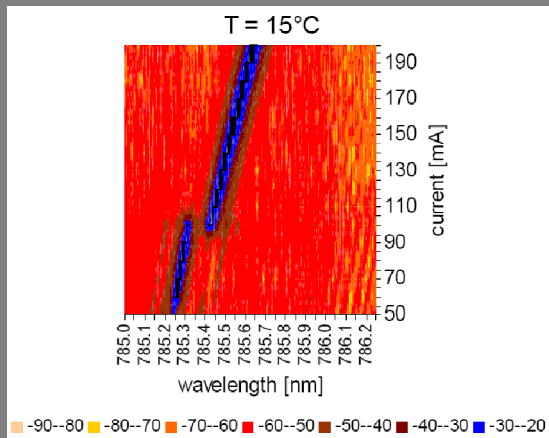
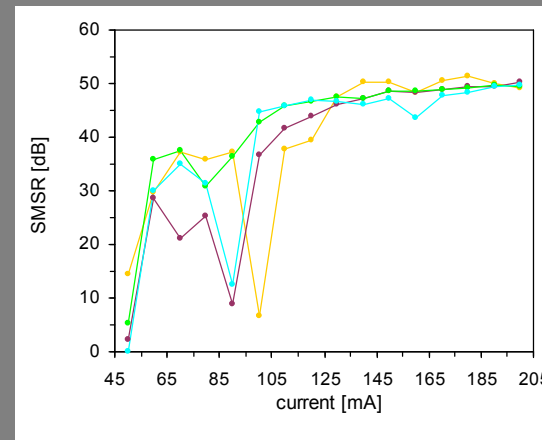


DFB-LASER VARIANTS

type λ [nm] Popt [mW] chip size package header variant

EYP - **ccc** - nnnn - nnnnn - nnnn - xxx nn - **nnnn**

- **DFB** **0000** Single Mode Operation at nominal Power and at one Temperature

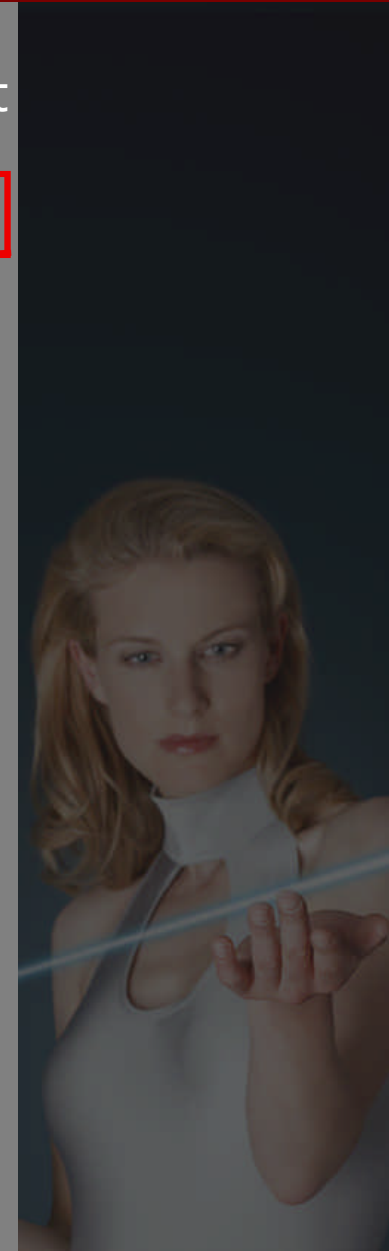
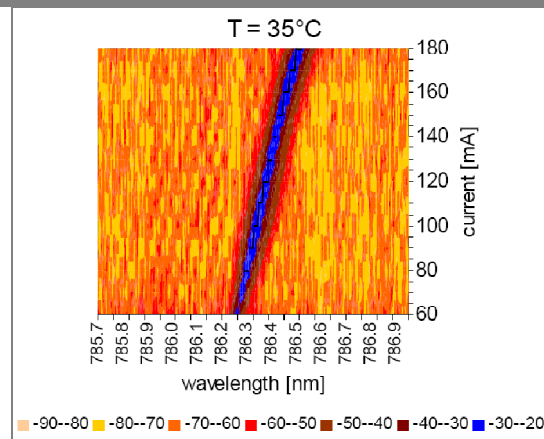
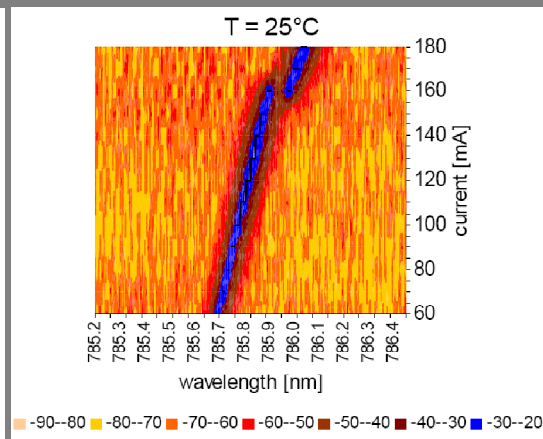
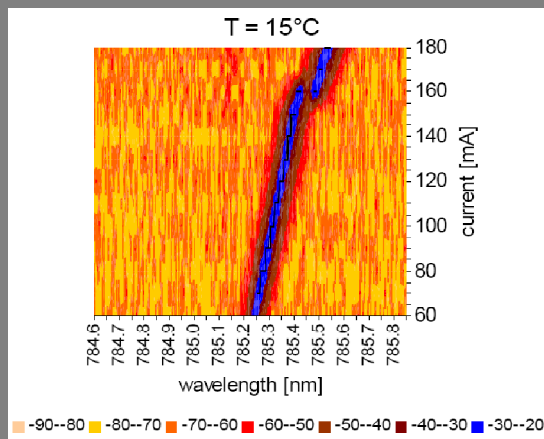
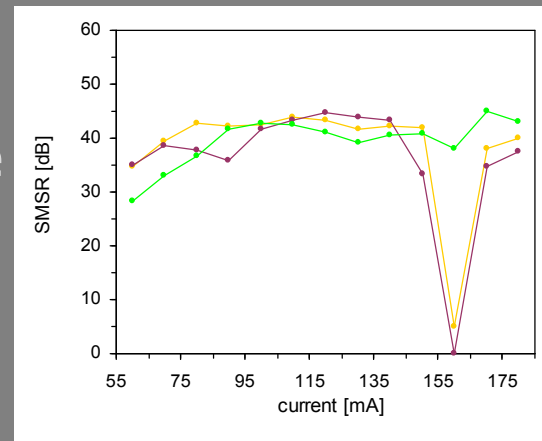


DFB-LASER VARIANTS

type λ [nm] Popt [mW] chip size package header variant

EYP - **ccc** - nnnn - nnnnn - nnnn - xxx nn - **nnnn**

- **DFB** **0001** Single Mode Operation at every Laser Current and at one Temperature

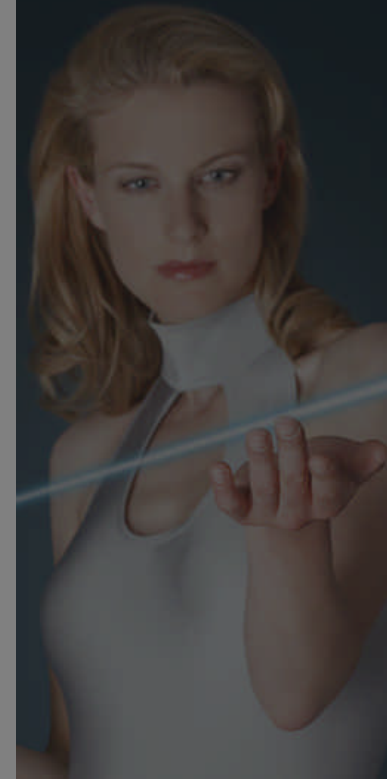
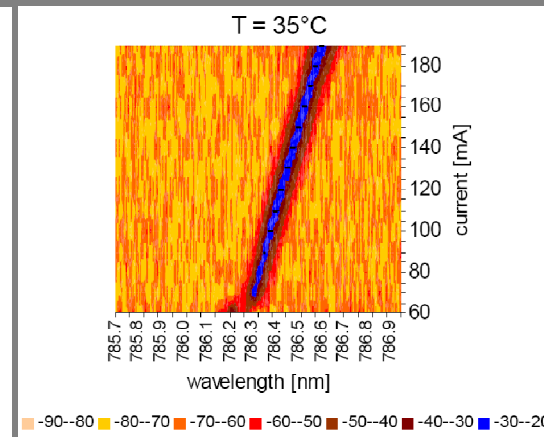
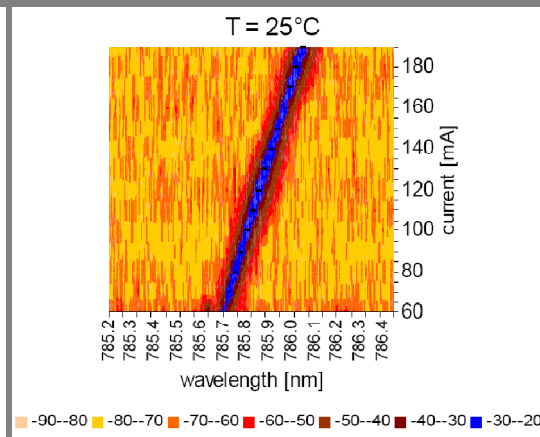
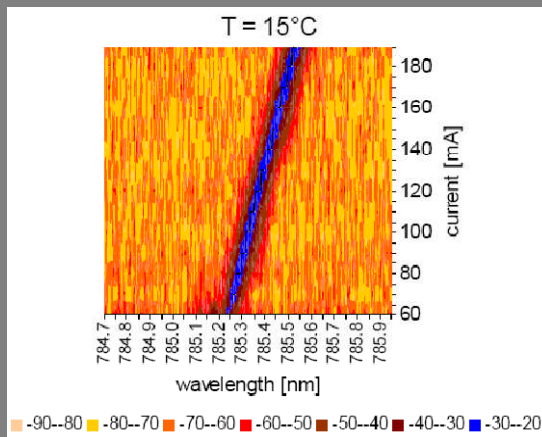
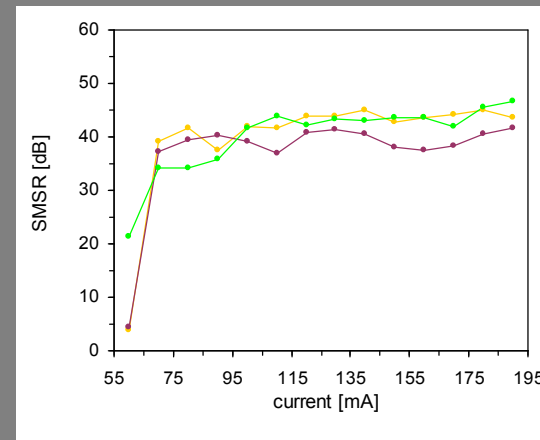


DFB-LASER VARIANTS

type λ [nm] Popt [mW] chip size package header variant

EYP - **ccc** - nnnn - nnnnn - nnnn - xxx nn - **nnnn**

- **DFB** **0002** Single Mode Operation at every Laser Current and at every Temperature



DFB-LASER VARIANTS

type λ [nm] Popt [mW] chip size package header variant

EYP - **ccc** - nnnn - nnnnn - nnnn - xxx nn - **nnnn**

- **DFB** **0005** Single Mode Operation at target wavelength (e.g. 780,2nm) at nominal power and between recommended operational temperature range of 15°C to 40°C

